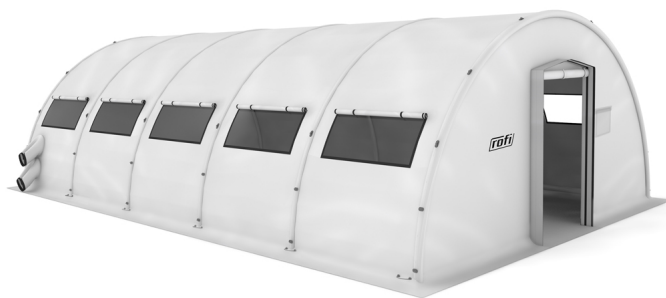


Heavy duty high pressure inflatable shelter RAPID 6-600

Product Images



Short Description

The RAPID shelter is a high pressure, medium weight inflatable shelter that only requires a simple logistical support to deploy.

Description

The RAPID 6-400 shelter is a high pressure, medium weight inflatable tent that only requires a simple logistical support to deploy. The set up time depends on the power of the inflating compressor.

The RAPID 6 series comes in three different lengths of 19.69, 26.25 and 32.81 feet and a width of 19.69 feet as standard. They can be connected to each other length- and cross-wise and to other shelters like containers and vehicles, among others. The shelter is equipped with three layer windows allowing natural ventilation, with curtains operated from the outside.

The RIS (ROFI insulation System) inner liner designed for special climatic conditions, partition walls and flysheets are available for both 2-door and 4-door models. The integrated anti-skid PVC flooring protects against surface water, reptiles or bugs.

Advantages

- High pressure structure - 6-8 bar with overpressure valves on air tubes
- Rapid - 1 or 2 air filling points. 5-30 min setup time depending on the compressor type used
- Simple logistics - packed in standard pallets
- Multiple use - connectable to other LANCO or ROFI shelters

Application area	Civil Defence, Triage, Field Hospitals, First Aid Posts, Military, Decontamination and Hazardous Goods Operations, Accommodation and Catering, Police/Gendarmerie, United Nations, NGOs/Humanitarian organizations
Base area	646.00 ft²
Width	19.69 ft
Length	32.81 ft
Height	9.84 ft
Ridge height	9.84 ft
Packing size	6.56 x 2.62 x 3.77 ft
Weight	780.44 lbs