

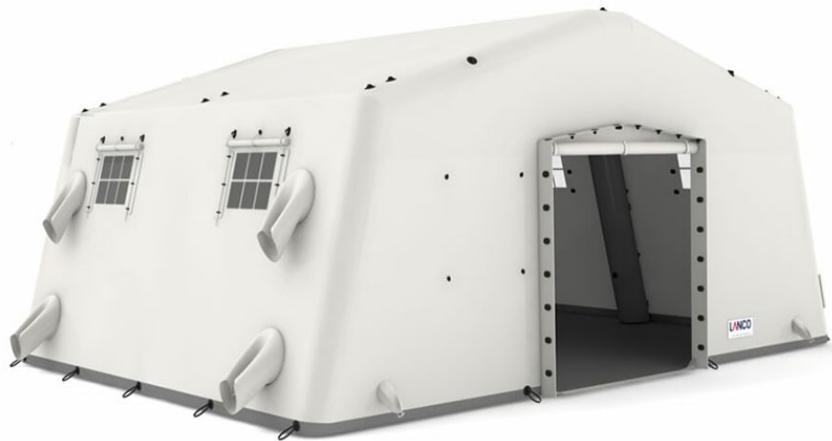


---

## AZF 350 medium duty low pressure inflatable shelter

### Product Images

---



### Short Description

---

Ready to use within minutes, the AZF series is the ideal solution for all emergency situations. Durable, they can be efficiently deployed on any type of terrain.

### Description

---

#### Frame

Main beams and ridge beams inflatable, made of airtight double-sided PVC coated polyester fabric [32 oz/yd<sup>2</sup>], fixed to the cover and floor. Eaves purlins made of aluminum. Easy replacement of cover and frame. The tents can be set up in 4-7 minutes, depending on the tent size. A pressure relief valve prevents excessive pressure in the frame.

## Tent skin

Tent skin is made of double-sided PVC coated polyester fabric [22 oz/yd<sup>2</sup>]; flame resistant, waterproof and mildew resistant.

## Floor

Floor covering of double-sided PVC coated polyester fabric [22 oz/yd<sup>2</sup>]. Available with non-slip embossing as option [25 oz/yd<sup>2</sup>].

Other colors available on request.

## Additional Information

---

Application area	Civil Defence, Triage, Field Hospitals, First Aid Posts, Military, Decontamination and Hazardous Goods Operations, Police/Gendarmerie, Weatherproof Shelter for Sensitive Equipment and Workshops, United Nations, NGOs/Humanitarian organizations
Base area	355.00 ft <sup>2</sup>
Width	20.67 ft
Length	16.90 ft
Eaves height	7.87 ft
Ridge height	10.33 ft
Operating pressure	4.4 psi
Weight	353 lbs